



THE CALL OF THE PEWEE

Volume 41, No. 7

www.peweevalleyky.org

July, 2009

LAWN FERTILIZER

Keeping a “Green” Lawn

The health of our streams begins in our yards!

If we have a lawn, we want it to be a beautiful lawn. Right? So, we control pests, kill the weeds, mow cool season grasses at least 3" high, and fertilize it. In other words, we work hard to produce a healthy lawn. But we also want healthy streams—for fishing, swimming, and boating - for now, and for future generations.

So, what's the connection?

We have learned that excess fertilizer from croplands, golf courses, and thousands of home lawns is washed from the land by heavy rain-falls. The runoff flows through drainage ditches and storm drains, and ends up in our streams. In the streams, the fertilizer that grows healthy plants promotes the growth of harmful algae. As the algae grow, they rob the water of oxygen and block the sunlight from reaching useful aquatic plants and fish.

But there is good news!

The good news is that we can have both a healthy green lawn and healthy streams! It's as easy as 1, 2, 3!

1. Contact your County Cooperative Extension Service, have your soil tested, then, ask them to recommend the fertilizer you need. Tell

them the kind of grass you have (if you don't know, they can identify it for you) and the approximate size of your lawn. Each region of Kentucky has different kinds of grasses that do well in that area, and each lawn has different fertilization needs.

2. Buy the fertilizer that is recommended for your soil and type of grass. This fertilizer will be essential for maintaining your healthy and attractive lawn, because the grass needs to out-compete weeds, as well as recover from disease, insect infestation, and drought. To do this, it needs to be actively growing. So, remember, fertilizer is good; knowing which one to buy and how much to use can be confusing.

Fertilizer 101 - Fertilizer bags have three numbers on them. The numbers refer to the percentages of nitrogen (N), phosphorus (P) and potassium (K) by weight—in that order. So, 16-4-8 means 16% N, 4% P, and 8% K. All three are important, but your County Extension Service can tell you what you really need and what you don't. Let the experts guide you, but now you will know what they are talking about.

3. As a rule, all nitrogen fertilizer should be applied to cool season grasses in the Fall.

Continued on Page 10

OUR TOWN

Mayor

Bob Rogers 241-7340
Police/Roads
rogers@peweevalleyky.org

Council Members

Carol Akers
Public Safety
akers@peweevalleyky.org

Dana Barrette
Finance/Insurance/Storm Water
barrette@peweevalleyky.org

Willard Chambers 241-4979
Waste Management/Mowing

Dick Filippini
Tree Board
filippini@peweevalleyky.org

Amy Johnson
Sidewalks/Communication
johnson@peweevalleyky.org

Bethany Major
Town Hall/Festivities
major@peweevalleyky.org

City Clerk

Laura Eichenberger
241-8343
clerk@peweevalleyky.org

Editor

Paula Kennedy 241-4106
editor@peweevalleyky.org

The Call of the Pewee is available online at
www.peweevalleyky.org

JULY COUNCIL MEETING

The regular meeting of the City Council of Pewee Valley, Kentucky was held on July 6, 2009. In attendance were Mayor Bob Rogers, Council Members Dick Filippini, Bethany Major, Amy Johnson, Dana Barrette, Will Chambers, and Carol Akers. Also in attendance were John Singler, City Attorney, and Laura Eichenberger, City Clerk.

FINANCIAL REPORT

Dana Barrette reported that approximately \$88,000 will be moved to the City's reserves at the end of the Fiscal Year 2008/2009 budget. The City received about \$43,000 more in insurance taxes than was budgeted and property taxes were 98.4% correct (there is about \$3,300 outstanding).

Mayor Rogers reported that it will be another two to three weeks before we receive the certified tax roll from the PVA. We cannot set the tax rate for 2009 property taxes until the certification is complete.

Mayor Rogers reported the state has confirmed that all looks well with the City's FEMA claim from the January Ice Storm. It is unknown when the reimbursement money (\$25,828.94) will be received.

OPEN COMMENTS

Resident Jan Beaverson brought forth concerns regarding the run-off from the creek between her and Mike Turner's property on Rollington. Mayor Rogers noted that the creek is an intermittent blue line stream. Ms. Beaverson's concerns are that the creek/stream is overgrown and has done considerable water damage. Mayor Rogers noted that the right-of-way on the road and any debris build-up under the bridge is the City's responsibility. Where the creek/stream flows through private property, it is the property owner's responsibility to keep debris from blocking the flow of water. Ms. Beaverson noted that

while the stream/creek is not on her property, it is directly affected by the run-off when there is heavy rain. Laura Eichenberger will coordinate a time when Glenn Rowland and Jan Beaverson can meet to look at the problem areas.

A resident asked the Mayor and Council if the City is considering financing new crossing gates with the surplus money going into reserves. Mayor Rogers responded that the City is proceeding accordingly with the resolution as originally planned. The Mayor reported that he met Thursday, July 2, 2009 with members of the Kentucky Transportation Department and relayed the urgency of need of quad gates. The City is continuing with the necessary steps to follow-through with this project's plan of action. There is a packet of correspondence in support of the Quiet Zone status and Houston Lane crossing that is available through the City Clerk, Laura Eichenberger. For anyone who would like a copy, Town Hall office hours are Monday through Friday, 9:00 a.m.--12:00 p.m.

Resident David Kozal asked if there is a timeline/update for approval from the Federal Railroad Administration (FRA). Mayor Rogers responded that the City Engineer is working with the FRA and there is no further update at this time. He added that bid requests for curbing at the Houston crossing will likely go out in the next 30 to 60 days.

Mr. Kozal also inquired about the City's total reserves and if those funds are earmarked toward

projects such as crossing gates, widening Houston, etc. Mayor Rogers responded that the funds are marked for City improvements, disasters, sidewalks, road improvements. There are major problems that must be addressed and were submitted, but not chosen, for "Shovel Ready Projects" stimulus funds. It takes a significant amount of time to get through the red tape for state and federal government stimulus and FEMA funds. Mr. Kozal further inquired whether the City has ever addressed a three or four year strategic plan for portioning the funds for projects. Mr. Kozal also applauded the City's financial surplus as it is not an easy task to accomplish.

FIRE DEPARTMENT REPORT

No report given.

POLICE REPORT

Chief Michael W. Losik submitted the following report for the month of June 2009:

This past month, he received a call from a resident that was solicited by phone to give to a particular charity. The resident did not feel comfortable with this method of fund raising so he declined to give. After thinking about it he contacted the Chief to see what he thought. The Chief explained to him that sometimes a good charity hires a professional fundraiser for their organization. The problem with this is that a professional fundraiser may keep as much as 85 percent of the money collected

Sherry's Hair Salon
301 LaGrange Road
Pewee Valley, KY 40056
241-5261

By Appointment Only
Tuesday - Friday

Sherry Malone, Owner & Operator



Bachelor of Music Education Degree
Bachelor of Piano Performance Degree
University Trained in Piano Technology

Piano Tuning & Repair

Gene Long
343 Central Ave.
Pewee Valley, KY 40056
(502) 243-4864

30+ years experience

leaving just 15 percent for the organization. Many times scam fundraisers will use key words like, “children,” “police,” “firefighters,” or “animals” in soliciting money from the public. Beware of phone solicitations. Never give to a group you do not know and certainly never give your credit card number to someone over the phone.

In April, the following activity occurred:

Traffic Stops – 42	Citizen Contacts – 87
Calls for Service – 9	Warning Citations – 27
Assist Other Units – 5	Accident Reports – 1
House Watches – 71	Routine Patrol Hours – 137
Citations Issued – 6	Hours on Detail – 4.5
Criminal Reports – 2	Signs Removed – 8
Radar Hours – 24.5	

A resident asked how to reach the Pewee Valley Police directly (recently, a relative working in the house accidentally set off the security alarm). Chief Losik noted that his cell phone number (640-9664) can be found on the City website. Residents should call 911 for emergencies. Residents can also call Oldham County Dispatch (222-0111) for non-emergency calls. Pewee Valley Police calls are run through Oldham County Dispatch.

ANNOUNCEMENTS

Mayor Rogers publically thanked The Bank Oldham County for their monetary contribution to the 2009 Summer Festival. Mayor Rogers also thanked the Flynn Brothers for their asphalt work on Elm Street.

Certificate of Appreciation - Mayor Rogers presented former Pewee Valley Mayor Vivian Reinhardt with a framed Certificate of Appreciation. Ms. Reinhardt served as Mayor of Pewee Valley for 13 years. She continues to serve the community by planting and maintaining flowers throughout the City, serving on the Tree Board, and Board of Adjustments, etc. A round of applause was given in honor of Ms. Reinhardt.

Oldham County Planning and Development Services (Formerly known as Oldham County Planning & Zoning) - Paul Culbertson reported on the activities of Planning and Development in June. The application by David Gleason to remove Tanglewood Place and portions of Allen Avenue was approved. Tanglewood Subdivision was platted in 1915. Within that were three roads, Fitzpatrick (now Locust Lane), Allen Avenue, and Tanglewood Place. The records show, as it was reported to the Commission, Pewee Valley never accepted those roads into its system. It was concluded by the Commission that the roads could be removed. The Commission also approved a landscaping waiver for Insulation Technologies in LaGrange to move two trees from a parking area to a second location. The trees were preventing tractor trailers from making the turn properly.

Let us open
new doors
for you!





The Filipini Team

Direct (502) 992-4201
Office (502) 425-6000
Dick's cell (502) 802-1247
Fax (502) 241-5313
info@homebyfili.com



RE/MAX PROPERTIES EAST
10525 Timberwood Circle, Louisville, KY 40223

Ann Weingardt - Director

207 LaGrange Road
Pewee Valley, KY 40056
(502) 243-2522

Ballet Jazz Hip-Hop Tap Yoga
Ages Three to Adult



**The Dancer's
Pointe**

For the month of July, the Commission will be reviewing the Oldham Parks Recreation Master Plan presentation.

Mr. Culbertson will continue to attend the Pewee Valley City Council meetings and provide a brief update of items coming through Oldham County Planning and Development Services.

COUNCIL MEMBER REPORTS

Dick Filippini (Tree Board):

No report given.

Bethany Major (Town Hall/Festivities):

Summer Festival - Bethany Major reminded everyone of the upcoming Summer Festival, Saturday, July 25th, 7:00 p.m.—10:00 p.m. The Festival will include live entertainment by the Monarchs, activities for children, food, and a dunking booth.

Historical Society (Sister City) - The Historical Society is interested in pursuing Bernie, Texas as a sister city. If there are any questions or objections from the City Council, please let Bethany know. The Historical Society also wants to pursue more historical markers in the City (to help locate the old confederate home and the old stagecoach stop on Floyd'sburg Road).

Morris Property ("Park") - The garage structure has been removed from the Morris Property. The next step is to tackle the drainage issue and we already have one bid (hoping to piggyback on the drainage needs on Tulip as well). The drainage problem has to be addressed before another struc-

ture can be put on the property. The Mayor stated that the City has dealt with some of the drainage issues with a grant from the State Highway Department in the past and MSD, the City Engineer all looked into it. Dick Filippini will meet with Mel Milburn and Greg Rose to take a look at the drainage issues relating to the Morris Property.

Carol Akers (Public Safety):

Historical Signs - Carol Akers reported that Senator Harris provided the state contact information for fixing or replacing both historical signs. We are now on the list with the State and have to wait.

Street Lights - The Oak Valley Home Owners Association has decided to replace three street lights with the standard lights used throughout Pewee Valley. Oak Valley opted for other lighting options and is responsible for paying the difference in the monthly fees for those specific lights. The City has reimbursed Oak Valley annually for its portion (amount paid for standard lighting) and Oak Valley has covered the difference. Oak Valley will contact LG&E to remove the lights and then go through the City to have standard lights installed.

Dana Barrette (Insurance/Finance/ Water Quality):

Water Quality - Dana Barrette reported the need to meet with Stantec to set up a calendar of activities for the City to complete in order to be in compliance with the Storm Water Permit. The Morris Property is a large component in the water

Oldham County Physical Therapy

Shannon D. Snider P.T., CSCS
Karen Snider P.T.

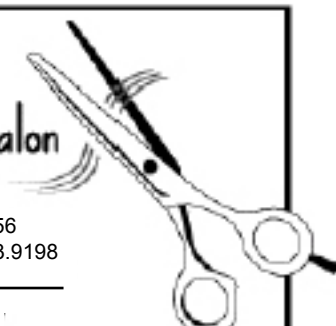
P. O. Box 615
309 LaGrange Rd.
Pewee Valley, KY 40056

Office: (502) 243-6868
fax: (502) 243-6867

Rosemary's Salon

8712 Ash Avenue
Pewee Valley, KY 40056
502.241.9198 502.243.9198

Handicap Accessible



quality mandate as it will provide the opportunity for public education and interaction, as well as have a positive environmental impact on the City. Mayor Rogers suggested that the City have a table at the Summer Festival with information about the stormwater mandate. Dana Barrette or Bethany Major will contact John Maleug at Stantec, about handouts for a Water Quality Information Table at the Festival.

Currently, the City is planning to collect the Water Quality Fee on the 2009 property tax bills. The fee (effective July 1, 2009) will be collected in arrears with payments expected by December. For most residents, the fee will be \$3.00 per month (July—December 2009). The 2010 Water Quality Fee billing will be for the full 12 month year. Dana reported \$23,000 was budgeted for collection and \$23,000 is budgeted for expenditure.

Amy Johnson (Sidewalks/Communications):

Morris Property ("Park") - Amy Johnson noted that the "Morris Property" needs another name---just "Park" until a name is decided. Amy read aloud a paragraph from Stantec:

"The vision for the park is to provide a location for community gathering and green space for recreation. It is envisioned that the park will also play a major role in supporting the community to achieve compliance with the City's new storm water permit. Consistent with the permit, the City's vision for the property includes providing environmental education, showcasing how Pewee Valley residents and businesses can cost effectively, and in an aesthetically pleasing

way, protect the environment from the potential harmful impacts of urban storm water run-off. For example, considered but not limited to: pervious pavement (water trickles through) parking lot, trails, educational signage, green roof shelter with restroom facilities, innovative on-site leach field (can be used as a planting area, bog garden), enhanced grass drainage swells, rain barrels, rain gardens vegetative buffers, native trees and plants, etc."

This information will be given out for landscaping bids.

Sidewalks - Amy Johnson reported that a request for volunteers to serve on a sidewalk committee was published in the Call of the Pewee; but, received no response. All the leg work for upcoming projects has been done. After discussing with Mel Milburn, the City Engineer, it was decided to start on Central Avenue (by Rollington) at the hill, on the same side as the cemetery. There have been complaints about the hill (you can't see anything coming the other way) and it is dangerous. There is \$20,000 in the sidewalk budget for fiscal year 2009/2010.

Communications - Amy Johnson reported that Laura Eichenberger has been working on updating the website. Ordinances, minutes (including "draft" minutes from the most recent City Council Meeting), and agendas have been added and are current. The Ordinance page also now includes a search feature. We want to find out if people are really using the website and how we can improve their experience with the site. The web address is: www.peweevalleyky.org.

Tree Service:

- Pruning
- Cabling
- Removal
- Stump Removal



Beechwood
Trees & Gardens

Since 1988

Call Paul Clinton or Kevin Klarer at 241-0471

Landscaping:

- Tree planting
- Shrub planting
- Mulching
- Maintenance

Will Chambers (Waste Management/Mowing):

No report given.

Bob Rogers (Police/Roads):

The Mayor will soon meet with the City Engineer to begin determining which roads need to be addressed this fiscal year.

FARMERS MARKET

Doc Stuedle reported the biggest turn-out ever (at least three times as many people as in the past) for the Farmer's Market. A vendor set up a large Farmer's Market sign and that may have been the reason. The City will have a double sided sign made for the Farmer's Market. The Farmer's Market was also announced on the front page of the COTP.

PEWEE RESIDENTS

PLEASE SUPPORT OUR ADVERTISERS.
THEY HELP MAKE
THE CALL OF THE PEWEE POSSIBLE!

CRESTWOOD

PLUMBING INC.

Quality Service at a Reasonable Price

502-241-2101

P. O. Box 464
Pewee Valley, KY 40056



Ed Nelson, ChFC
enelson@clear-trace.com

Clear Trace LLC
Fee-Only Financial Planning
Registered in Kentucky and Indiana

Pewee Valley, KY

Objective advice with YOUR interest FIRST

(502) 410-1124 direct
(502) 251-4301 office
<http://www.clear-trace.com>

OLD BUSINESS

There were no old business items for discussion.

NEW BUSINESS

Block Party Street Closing - The Mayor presented a request from the Loydsborough section of Pewee Valley (Rebel Drive and Colonel Way neighborhood) to close a section of Rebel Drive between Colonel and Cherry (with local traffic still able to get through) for a block party, Sunday, September 20, 2009, 5 p.m.—9 p.m. Chief Losik noted that as long as there are signs clearly marking the area on both ends there is no problem with closing the road. EMS and Fire agencies must also be notified.

The Council Members agreed that the block party is a great community event and there were no objections.

Fiscal Year 2008/2009 Audit - Dana Barrette reported that the same firm, McIntyre and Wooldridge, that has conducted the annual audit in past years have been contracted to perform the 2008/2009 audit.

First Reading: An Ordinance Amending the Budget for the City of Pewee Valley for the Fiscal Year Beginning July 1, 2008 and Ending June 30, 2009 - Changes to six line items in the 2008/2009 Budget were presented in a printed e-mail as a first reading to the amended budget. Stan Clark, the City Treasurer provided the numbers in this format (John Singler, City Attorney, will put the numbers in the formal ordinance format for the second reading). The amendment is a matter of balancing the budget as end of year invoices are received. Dana Barrette motioned to accept the proposed budget amendment as a first reading. The motion was seconded by Carol Akers. All Council members voted in favor.

Upon approval of payment of outstanding bills, the Council voted unanimously to adjourn.

Join the Pewee Valley Woman's Club for a Meet and Greet in August

The Pewee Valley Woman's Club is holding an informational gathering open to all women in the area who are interested in keeping our Village and County a great place to live!! Currently the only independent Woman's Club in Oldham Co., we are proud of our history of being a vibrant group that makes a difference and are actively seeking new members.

The PVWC was founded on February 26, 1952. For the first few years the Club met at the Crestwood Civic Club Building. In 1966 they incorporated and bought the Pewee Valley Bank building for use as a clubhouse. It was the first club for women's civic activities to be organized in Pewee Valley.

The PVWC is not just for women who live in Pewee Valley. It's an active civic organization



PEWEE VALLEY CEMETERY

Established 1871

Burial Sites Available

Bill Herdt 241-4194
Bert Stoess 241-4202
B. Murphy 241-8049

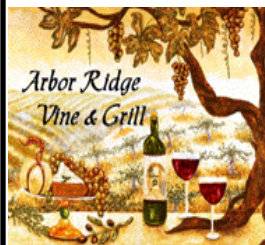
open to all women who live in Oldham County and adjoining counties. The Club's building is located at 218 Mt. Mercy Drive. This building is listed on the National Register of Historic places as a part of Central Avenue Historic District.

The Club's purpose "is to create an enjoyable community of members that promotes education, civic improvements, and charitable services" in our local area and to have fun doing so. We raise money for college scholarships to be given to county high school seniors by holding a fall craft show, catering meals for the Little Colonels Playhouse, Chef's Classes, yard sales and an upcoming bike tour for the summer of 2010.

An exciting new outlet our club has started is a Garden Group with the intent of beautifying the Valley. We have gone on field trips to surrounding gardens and vineyards. Next up may be the Bourbon Trail. The PVWC also sponsors a Book group, Investment club, Social outings, Bridge card group and more. Our monthly luncheon meetings with topical programs are held the 3rd Wed. of each month, Sept.-May, at 10am, 9:30 coffee.

The Ladies of PVWC would like to invite women of Pewee Valley to attend a "Meet and Greet Hour" on August 19, 2009 at 10am at the PVWC Clubhouse, 218 Mt. Mercy Dr. Please RSVP to President Beverly Arave, 241-0432 or Membership Chair Rita Pipes, 243-2712.

Oldham County's Place for Everyday Casual Dining



6402 Westwind Way, Crestwood
(502) 241-5544

Offering Specials at Every Meal
Complimentary High-Speed Wi-Fi

Visit our website for
directions, current menus or
to order on-line for pick-up.

www.arborridgevineandgrill.com

A Picnic in Pewee - July 25, 2009



Lawn Fertilizer

Continued from Page 1

Why? For two reasons: plant growth and run-off.

First, in the Fall, the growth of grass is in the root system. The development of a healthy root system is the key to a strong, healthy lawn that can withstand drought and recover from stress. Nitrogen is also essential for the blades of grass, but in the Fall, both roots and leaves benefit from the fertilizer. (Warm season grasses, like zoysiagrass and bermudagrass, should be fertilized in the summer.)

A second reason for fertilizing in the Fall (or Summer) is that heavy Spring rains can carry fertilizer from the lawn to the storm drain and then into our streams—before the plant has had an opportunity to take it up! At any time, don't fertilize before a heavy rain. And, never more than is recommended. More is not better!

So, having a "Green" lawn doesn't just mean the color. It means having a healthy lawn and, at the same time, having healthy streams.

Remember: Think Fall and use less!



Twelve family members of Virginia Turner on Rollington Road gathered recently to build their mother a Pewee Valley fence. It took the hard-working group approximately one week to complete the fence on two sides of her two-acre property.

PEWEE VALLEY ASSAULT

Oldham County Police responded to an alleged assault in the parking lot of St. James Episcopal Church on Saturday, July 11th. A 23-year-old woman claimed she was abducted from the parking lot at the Paddock Apartments off



Factory Lane and driven to the church where she was physically and sexually assaulted.

A sketch of the suspect is shown here. Anyone with information is asked to call Oldham County Police at 222-1300.

DOG FOUND

James and Debbie Ireland of Rollington Road recently found a dog roaming in Pewee Valley. It is a yellow-brown, male Chow. If this is your missing pet, call the Ireland's at 241-7463.

**PEWEE VALLEY
FARMERS' MARKET**
Saturday's 8:00 am - 12:00 noon
St. James Episcopal Church

PEWEE VALLEY CALENDAR OF EVENTS

DATE	ACTIVITY	FOR INFORMATION
REGISTER NOW	Fall Softball League - Men's and coed softball starts August 10. Six regular season games plus a single elimination tournament. League fee \$295.	O.C. Parks & Recreation 225-0655
Mon, Aug 3	7 pm - Pewee Valley Town Council Meeting.	Pewee Valley Town Hall 241-8343
Sat, Aug 8	8:30 am - Fastline Fun-Raising Run/Walk - 5K Run/1 Mile Walk; 4900 Fox Run Road, Buckner. Fee \$25.	O.C. Grand Slam 241-8534
Sat, Aug 8	6 - 9:30 pm - Smith-Berry Vineyard Dinner and Concert - Arnett Hollow (traditional bluegrass, rock, jazz).	Smith-Berry Vineyard 845-7091
Tues, Aug 11	5:30 - 8 pm - An Evening of Fresh Herbs and Heirloom Tomatoes - Sampling, cooking/preparation of fresh herbs and tomatoes. \$10 members; \$15 for non-members	Yew Dell Gardens 241-4788
Sat, Aug 15	11 am - Cornhole Tournament - Inaugural tournament to be held at Wendell Moore Park. Entry fee \$50 per team.	O.C. Parks & Recreation 225-0655
Wed, Aug 19	10 am - Pewee Valley Women's Club Meet and Greet - Find out about all the Women's Club activities at this open house. PVWC Clubhouse, 218 Mt. Mercy Drive, Pewee Valley.	PWVC 241-0432 or 243-2712
Thurs, Aug 20	7 - 9 pm - Concert in the Dell - Bourbon Baroque performs 17th and 18th century period music. \$12 members; \$15 non-members.	Yew Dell Gardens 241-4788
Sat, Aug 22	6 - 9:30 pm - Smith-Berry Vineyard Dinner and Concert - Hog Operation (bluegrass).	Smith-Berry Vineyard 845-7091
Sun, Aug 30	LaGrange Ironman Festival - Watch the cyclists pass through town twice as they conquer the LaGrange Loop. Shaded viewing, restaurants, shops and fun attractions	Discover Downtown LaGrange 269-0126

The only address you'll need to find your new home.

www.cbmcmahan.com

Search any home from your phone!

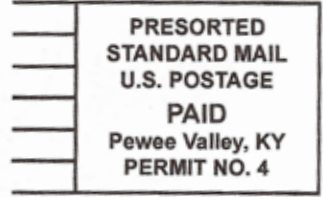
502-515-4000

COLDWELL BANKER
McMahan Co.
Each Office Independently Owned and Operated.

THE CALL OF THE PEWEE

312 Mt. Mercy
P. O. Box 769
Pewee Valley, KY 40056

www.peweevalleyky.org



The Call of the Pewee is a monthly publication of the Pewee Valley City Council, Bob Rogers, Mayor, and is mailed free to all Pewee Valley residents.

To submit news or advertising, please contact **Editor Paula Kennedy** at 241-4106 or email at: **editor@peweevalleyky.org**. A yearly subscription for non-Pewee residents is \$12.00. To subscribe, send your name, address, telephone number and payment to:

City Hall • 312 Mt. Mercy • P. O. Box 769 • Pewee Valley, KY 40056

Gravelly Power King Kohler

TRACTOR SALES & SERVICE
HERDT MOTOR COMPANY
since 1910

Wm. Herdt, Jr., Owner

(502) 241-8445
221 La Grange Road P. O. Box 785 Pewee Valley, KY 40056

Cissells Transmission

Complete Auto Repair
241-5444

Transmissions Front & Rear Ends
Engine Work Brake Work
Computer Balance Starters, Alternators
Radiator Work All Make Tires

406 Central Avenue