



# THE CALL OF THE PEWEE

Volume 41, No. 8

[www.peweevalleyky.org](http://www.peweevalleyky.org)

August, 2009

## Bringing a Little Wildness into Your Life

By Amy Johnson

Last summer during the drought, I was watering flowers with a hose, when a ruby-throated hummingbird began tending the red flowers (sage and cardinal vine) and got caught in the water. I held still and moved the water, and the fearless, or dumb, hummingbird flew into the water again. It was then that I realized: hummingbirds like to fly in the rain. He was taking a bath and cooling off.

Purposely growing plants that attract birds and wildlife always makes life more interesting. It also provides habitat, food, shelter, hiding places, and just plain beauty.

In our back yard in Pewee Valley, we have had barking baby foxes, deer, coyotes, a red-tailed hawk family, several owls, and many unusual birds migrating through. Bringing back a bit of wildness to this suburban habitat also helps slow runoff, purify water, decrease sound, and provide more cooling and privacy for our home.

Forty years ago, our section of Pewee was a summer youth camp for city children, and was a hardwood forest with many different species of trees, shrubs and wildflowers. Some of these are still here, and some have been mowed or supplanted by nursery plants that are not native to this area.

As birds migrate north each spring, they feed all along the way. Their diet consists of



*Bush honeysuckle*

bugs, seeds, flowers, as well as acorns and invertebrates. For thousands of years, their diet was pretty much supplied by the environment, but as humans have moved in more non-native species this is not always the case. The woods in Pewee Valley are now full of invasive plants such as bush honeysuckle, privet, euonymus, ivy, periwinkle, and burning bush, that crowd out the more delicate native plants.

Bringing back a wild place, or restoring one, will restore food and shelter to migrating birds and other creatures. The streams will be cleaner, and so will the air. Just hearing the flute-like song of the thrush in spring makes it all worthwhile.

*Continued on Page 10*

# OUR TOWN

## Mayor

Bob Rogers 241-7340  
Police/Roads  
rogers@peweevalleyky.org

## Council Members

Carol Akers  
Public Safety  
akers@peweevalleyky.org

Dana Barrette  
Finance/Insurance/Storm Water  
barrette@peweevalleyky.org

Willard Chambers 241-4979  
Waste Management/Mowing

Dick Filippini  
Tree Board  
filippini@peweevalleyky.org

Amy Johnson  
Sidewalks/Communication  
johnson@peweevalleyky.org

Bethany Major  
Town Hall/Festivities  
major@peweevalleyky.org

## City Clerk

Laura Eichenberger  
241-8343  
clerk@peweevalleyky.org

## Editor

Paula Kennedy 241-4106  
editor@peweevalleyky.org

The Call of the Pewee is available online at  
[www.peweevalleyky.org](http://www.peweevalleyky.org)

## AUGUST COUNCIL MEETING

The regular meeting of the City Council of Pewee Valley, Kentucky was held on August 3, 2009. In attendance were Mayor Bob Rogers, Council Members Dick Filippini, Bethany Major, Amy Johnson, Dana Barrette, Will Chambers, and Carol Akers. Also in attendance were City Attorney John Singler and City Clerk Laura Eichenberger.

## FINANCIAL REPORT

Dana Barrette reported that the Fiscal Year Budget 2008/2009 will be closed out tonight. Approximately \$89,000 will be added to the City's reserve.

## OPEN COMMENTS

Mayor Rogers opened the floor to resident comments, noting questions should be held until a more appropriate time when they can be fully addressed. The Open Comments portion of the meeting is structured for the Council to receive resident comments/concerns within a reasonable length of time without limiting the amount of allotted time when the city officials can meet legally as the City Council. Responses to resident comments can be addressed at a later time with the appropriate Council member or Mayor. City officials' contact information is listed in The Call of the Pewee, and can be obtained through the website ([www.peweevalleyky.org](http://www.peweevalleyky.org)), or by calling the City Clerk's Office at Town Hall (502/241-8343), Monday-Friday from 9 a.m. til noon). The Mayor stated, he would be glad to answer questions in the 30 days between Council Meetings and/or immediately before or after the meeting.

Resident David Kozal noted that there was no mention of the reserve balance in the July 2009 City Council Meeting Minutes, though an approximate total balance was mentioned in the meeting. Mr. Kozal brought forth several topics and questions: (1) What is the status of the

Houston Lane crossing? (2) How does the City of Pewee Valley approach drainage issues? (3) There have been a number of power outages in the past year. Who is responsible for trimming around power lines? (NOTE: LG&E is responsible for trimming near and around power lines. Please notify LG&E of problem trees/limbs on or near power lines.) (4) In regards to taxes, in light of the reserve, how is the City Council going to address property taxes.

## **POLICE REPORT**

Chief Mike Losik reported on the sexual assault that occurred last month at the St. James Episcopal Church in Pewee Valley. Oldham County Police Detectives are handling the investigation. This appears to be a crime that originated in Louisville and just happens to have concluded in our city. Residents should not be fearful; however, as always, be alert to your surroundings and report any unusual activity.

In July, the following activity occurred:

Traffic Stops – 40	Citizen Contacts – 80
Calls for Service – 6	Warning Citations – 28
Assist Other Units – 3	Accident Reports – 0
House Watches – 70	Routine Patrol Hours – 122.5
Citations Issued – 6	Hours on Detail – 10.5
Criminal Reports – 0	Signs Removed – 7
Radar Hours – 25	

Dick Filippini asked Chief Losik if the FBI is involved because the crime began in Jefferson County and continued into Oldham County. Chief Losik responded that the Louisville Metro Police are handling the kidnapping investigation and Oldham County Police are investigating the physical and sexual assault. Each jurisdiction is working on their portion of the case and communicating with each other.

The sketch of the suspect is posted outside Town Hall, the Pewee Valley Post Office, and was published in The Call of the Pewee and The Oldham Era. Copies of the sketch were distributed to those present at the meeting.

## **FIRE DEPARTMENT REPORT**

No report given.

## **ANNOUNCEMENTS**

The 2009 Summer Festival was a huge success. There was roughly a 25% increase in attendance and the Festival was about 75% completed before the thunder storms arrived.

Mayor Rogers publically thanked the Pewee Valley Fire Department, Chief Mike Losik and deputies from the Oldham County Sheriff's office, Donna Russell from the Historical Society, Frank Hill and Glenn Rowland for displaying their show cars, The Monarchs, and The Catering Company (Euro-Market, LLC) for their presence and work on the Summer Festival.

Mayor Rogers also thanked and gave a round of applause for Bethany Major for such a great job in coordinating the Summer Festival.

## **COUNCIL MEMBER REPORTS**

**Dick Filippini** (Tree Board): Dick Filippini reported that the Tree Board has received complaints of limbs obstructing visibility at some of the railroad crossings. The Board has been working the last several weeks trimming trees. Mayor Rogers noted that LG&E recently completed a large amount of tree trimming behind Town Hall, Norton's and The Little Colonel Playhouse to help alleviate some of the frequent power outages of late.

**Bethany Major** (Town Hall/Festivities): Bethany Major thanked everyone who helped out with the Summer Festival. It was a great success, even with the storm. Bethany also thanked the local sponsors – Norton Medical Associates, PNC Bank, The Bank Oldham County and Huntington Learning Center – for their monetary donations and participation. Bethany noted that she has received requests to consider moving the date of the Festival next year so that it doesn't coincide with the Oldham County Fair. The next scheduled festivity is the Yule Log celebration.

**Carol Akers** (Public Safety): Carol Akers reported that she has met with Tom Whitaker, President of the Oak Valley Homeowners Association. They have arranged with LG&E for the removal and replacement of the special street lighting with the standard street lighting used throughout Pewee Valley.

**Dana Barrette** (Insurance/Finance/Water Quality): Dana Barrette reported on a recent meeting with Stantec to design a monthly calendar of activities to satisfy the stormwater mandate requirements. Most of the activities will be easy to accomplish and track on a regular basis.

Regarding the Water Quality Fee, we have talked with Randy White from the property tax bill printer, CSI Customer Solutions, Inc., about adding the Water Quality Fee on the 2009 tax bills. The Water Quality Fee will be billed in arrears for 2009 (July 1st through December 31st) at \$3.00 per month per ERU per parcel. The 2010 Property Tax bills will reflect the Water Quality Fee for 12 months.

John Singler noted that the Water Quality User Fee Policy (Ordinance #2, Series 2009, An Ordinance Establishing a Water Quality Drainage System) should be updated to reflect that the billing will be conducted by the City of Pewee Valley (not Louisville Water Company, as originally planned).

Laura Eichenberger has arranged with AT&T to have two phone lines at Town Hall. The main

number (241-8343) will contain a Water Quality Hotline voicemail option specifically for reporting illicit discharge, obtaining Water Quality information, etc. The second phone line will be a dedicated fax line (241-8348). All three Town Hall numbers will remain the same: City Clerk, 241-8343; Pewee Valley Police, 241-8099 (for emergencies dial 911); City Fax, 241-8348. The Water Quality Hotline voicemail option and dedicated fax line are expected to be effective around September 1, 2009.

Water Quality information (how to determine what is illicit discharge, suggestions and information for protecting water quality, etc.) will be communicated through The Call of the Pewee, the City website ([www.peweevalleyky.org](http://www.peweevalleyky.org)), and the Water Quality Hotline.

*Quiet Zone/Houston Lane Crossing* - Dana Barrette reported that the City has received one comment from CSX in response to the Notice of Intent (to establish a quiet zone and convert the Houston Lane crossing to one-way traffic) sent to the State and CSX. The CSX response to the Notice of Intent was forwarded to the City Engineer. Now that the 60 day waiting period has expired, the next step is to draft a Notice of Establishment.

**Amy Johnson** (Sidewalks/Communications): *Sidewalks* - Amy Johnson reported that Mel Milburn, City Engineer, will begin the engineering next week on the sidewalk at Rollington and



Clear Trace LLC  
Fee-Only Financial Planning  
Registered in Kentucky and Indiana



Ed Nelson, ChFC  
enelson@clear-trace.com

Pewee Valley, KY

Objective advice with YOUR interest FIRST

(502) 410-1124 direct  
(502) 251-4301 office  
<http://www.clear-trace.com>



Oldham County's Place for Everyday Casual Dining



6402 Westwind Way, Crestwood  
(502) 241-5544

Offering Specials at Every Meal  
Complimentary High-Speed Wi-Fi

Visit our website for  
directions, current menus or  
to order on-line for pick-up.

[www.arborridgevineandgrill.com](http://www.arborridgevineandgrill.com)

Central. This section will be the most expensive. We expect to at least complete the sidewalk along St. Aloysius' border, the cemetery, and possibly the next lot. Mel Milburn will have a more detailed report at the next meeting.

*The Park* - Bethany Major reported she is waiting on bids and drainage information from the Water Quality group on what can be done in The Park to comply with the stormwater mandate. Amy has looked into pervious concrete (concrete that allows grass to grow up through it and water to drain through). The pervious concrete is used at Big Rock in Cherokee Park in Louisville. We are looking into using it for flat sections of sidewalk; but, not on hills.

**Will Chambers** (Waste Management/Mowing): No report given.

**Bob Rogers** (Police/Roads): Mayor Rogers reported that with the unusual amount of rain in recent months (9 inches last week) we have ex-

perienced some issues on Rollington and Tulip. When Mel Milburn returns next week, we will begin working on the drainage issues right away. On Saturday evening, July 25th, a couple visiting the area from Ohio were stranded in their car on Ash Avenue due to the flash flooding. The couple sent an e-mail addressed to the City Council of Pewee Valley detailing their ordeal.

## OLD BUSINESS

**First Reading: Ordinance #8, Series 2009, An Ordinance Relating to the Closure of Tanglewood Place and a Portion of Allen Avenue:** Jim Williamson, attorney representing David Gleason and Margaret Castle, introduced himself and Albert Harrison, Land Surveyor. Mr. Williamson and Mr. Harrison presented the request to remove Tanglewood Place and a portion of Allen Avenue from the record plat to the June Planning and Zoning Commission and it was approved.

Mr. Harrison distributed a reproduced drawing of the old record plat of Tanglewood Subdivision. Mrs. Castle holds the deeds to lots 5, 6, 7, 8, 9, 15 and 20; Mr. Gleason owns the rest. The subdivision was created in 1915 and deeded out in 1919. The roads were never built or used. There are currently trees growing in Allen Avenue and Tanglewood Place that are 18" in diameter. The week prior to the Planning and Zoning Commission meeting, Mr. Harrison met with Steven Tucker, Kentucky Transportation Cabinet, at the site where Tanglewood comes out on LaGrange Road. The entrance would

*August Minutes  
Continued on Page 8*

## PEWEE VALLEY CEMETERY

*Established 1871*

### Burial Sites Available

Bill Herdt 241-4194

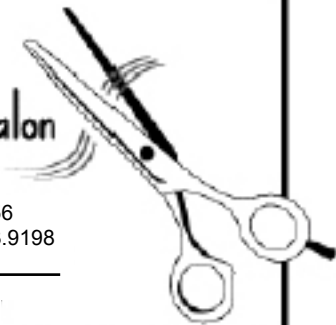
Bert Stoess 241-4202

B. Murphy 241-8049

## Rosemary's Salon

8712 Ash Avenue  
Pewee Valley, KY 40056  
502.241.9198 502.243.9198

Handicap Accessible



## EMERGENCY PREPAREDNESS

We've had our fair share of bad weather in the past year. Before winter weather sets in, make it a point to put together an emergency kit. A sample of items you may want to include can be found in this issue of **THE CALL OF THE PEWEE.**

# CREATING AN EMERGENCY PREPAREDNESS KIT

A sampling of items to consider in preparing your own kit.

√ Check off items as you add them to your emergency preparedness home kit or mobile kit

	Home Kit	Mobile Kit
<b>STARTER KIT</b> – These items* are included in the Red Cross Emergency Preparedness Kit – cost \$49.95 at redcross.org. They are great mobile kits and can be used as starter kits for home preparedness.		
*Nylon backpack		
*Personal First Aid Kit (with instructions)		
*Battery powered flashlight (batteries included)		
*Battery powered radio (batteries included)		
*Emergency blanket		
*Work gloves		
*Rain poncho		
*Breathing mask		
*Whistle		
*12-hour light sticks (3)		
*Moist towelettes (6)		
*Plastic sheeting (10' X 10')		
*Roll of duct tape		
*Water (2 qts)		
*Water container (2.5 gal)		
*Food bars (4800 calories total)		
<b>BASIC NEEDS</b>		
Light air-tight container(s) to store supplies		
Airtight plastic bags		
Candles/Matches/Lighter (stored in waterproof bag)		
Compact multitool (Gerber brand recommended)		
Fire extinguisher		
Additional batteries		
Blankets/sleeping bags/pillows		
<b>PERSONAL/HYGIENE</b>		
Towels/washcloths		
Toilet paper		
5-gallon buckets (with air-tight lids)		
Soap		

	Home Kit	Mobile Kit
<b>SPECIAL NEEDS - INFANTS/TODDLERS</b>		
Diapers		
Bottles/formula		
Baby foods		
Medicines		
Pacifiers		
Toys		
Bed/carrier seat/playpen		
Identification		
<b>SPECIAL NEEDS - ELDERLY</b>		
Walkers/canes		
Hearing aids		
Medicines		
Other personal/medical necessities:		
Special medical instructions:		
Special foods		
Identification		
<b>SPECIAL NEEDS - PETS</b>		
Food		
Water bowls		
Treats		
Medication		
Leash		
Play toys		
Pet carrier		
Scooper for waste		
Bed		
Identification		



require significant improvements on Highway 146 before it could be used. As the streets are now, having never been used or developed for use, future development is not possible. If the street closing is approved by the City Council, the parcels will be split between Mr. Gleason and Mrs. Castle.

A motion was made to introduce and accept as the first reading, Ordinance #8, Series 2009 regarding closing Tanglewood Place and a portion of Allen Avenue. The motion was seconded and all voted in favor.

**Second Reading: Ordinance #7, Series 2009, An Ordinance Amending the Budget for the City of Pewee Valley for the Fiscal Year Beginning July 1, 2008 and Ending June 30, 2009:** John Singler presented the second reading by summary, noting that the numbers in the amendment are the same numbers, adjusted slightly according to income. The budget amendment has been approved by Dana Barrette and Stan Clark.

A motion was made to accept the second reading by summary and adopt Ordinance #7, Series 2009. It was seconded and all voted in favor.

**Second Reading: Ordinance #6, Series 2009, An Ordinance Establishing the Tax Rate for Ad Valorem Taxes on Real Property for the City of Pewee Valley for the Fiscal Year Beginning July 1, 2009 and Ending June 30, 2010:** The tax roll list has been certified by the PVA office. The rate has been set at \$0.1439 per \$100 valuation of property as assessed for taxation.

A motion was made to accept the second reading and adopt Ordinance #6, Series 2009 setting the 2009 Tax Rate. The motion was seconded and all voted in favor by roll call.

**First Reading: Ordinance #9, Series 2009, An Ordinance Converting a Section of Houston Lane to One-Way Traffic:** John Singler presented the first reading by summary.

A motion was made to accept the first reading of Ordinance #9, Series 2009. The motion was seconded and all voted in favor.

**Farmers Market:** Doc Stuedle reported that the Farmer's Market is doing really well.

**Planning & Development Update:** Paul Culbertson reported that the Planning Commission did not meet in July. There were no new application submissions. Mr. Culbertson reported on the Special Review Committee meeting regarding the Pewee Valley Ordinance and text amendment



The only address you'll need to find your new home.  
[www.cbmcmahan.com](http://www.cbmcmahan.com)  
Search any home from your phone!  
**502-515-4000**

**COLDWELL BANKER**  
McMahan Co.  
Each Office Independently Owned and Operated.

FOR SALE  
COLDWELL BANKER

for the Scenic Corridor. The committee accepted the text amendments and recommended it go before the Planning Commission in August. The Oldham County Review of Parks and Recreation Master Plan will resume in August and the Commission will also review a zoning map amendment on one acre of ground on Dawkins Road (to be changed from commercial to residential), and the Pewee Valley Scenic Corridor Ordinance. John Singler will attend the August 25th Commission meeting representing the City of Pewee Valley.

Upon approval of payment of outstanding bills, the Council voted unanimously to adjourn.

### SIDEWALK COMMITTEE

The sidewalk committee now has three members: Beach Craigmyle, Barry Kellond and Amy Johnson.

### PEWEE PROPERTY TRANSFERS

- Jachin and Penelope Milici to Scott and Kimberly Finses, 102 Central Court \$472,000.



**PLUMBING INC.**

Quality Service at a Reasonable Price

**502-241-2101**

P. O. Box 464  
Pewee Valley, KY 40056

**Ann Weingardt - Director**

207 LaGrange Road  
Pewee Valley, KY 40056  
(502) 243-2522

**Ballet Jazz Hip-Hop Tap Yoga**

*Ages Three to Adult*



### SEPTEMBER COUNCIL MEETING

Please Note: The September City Council Meeting falls on a national holiday (Labor Day).

Per Rules of Procedure, Section 32.21-- Meetings, " . . . unless that date falls on a national holiday, in which case the regular meeting will be held at the same time and place, on Thursday immediately following the first Monday."

The next City Council Meeting will be Thursday, September 10, 2009, 7:00 p.m., at Town Hall. Please be sure to mark your calendars accordingly.

---

**PEWEE RESIDENTS**  
PLEASE SUPPORT OUR ADVERTISERS.  
THEY HELP MAKE  
**THE CALL OF THE PEWEE POSSIBLE!**

---

Sherry's Hair Salon  
301 LaGrange Road  
Pewee Valley, KY 40056  
741-5661

By Appointment Only  
Tuesday - Friday

Sherry Malone, Owner & Operator

### Cissells Transmission

Complete Auto Repair

**241-5444**

Transmissions	Front & Rear Ends
Engine Work	Brake Work
Computer Balance	Starters, Alternators
Radiator Work	All Make Tires

406 Central Avenue

## ***Bringing a Little Wildness in Your Life***

*Continued from Page 1*

How to start? Pick an area in your yard that you would like to turn “wild.” Clear out grasses first and leave some open soil. If you are working on a wooded area, learn the invaders above. A good place to start is with bushes. Bush honeysuckle has opposite leaves, grows tall and woody, and has red berries. It spreads very quickly. Pull it out by the roots on a moist day, or cut it and apply a dab of roundup if it is too big to pull.

Burning Bush has square stems with “wings,” opposite leaves and turns red in the fall. It is prolific and will take over. Learn how the young bushes look and start in spring.

Euonymus, periwinkle and English ivy are all creepers. They quickly cover up native plants. They need to be pulled by hand, and it



*Spicebush*

may take a few years, but is worth it when you begin to see native plants popping up.

After clearing out non-natives in our one acre “wood,” wildflowers such as trillium, goldenseal, trout lilies, and native bushes such as spicebush and dogwoods have had a space to grow. Spicebush is especially beautiful, and loves growing here. It produces beautiful yellow spring flowers and edible berries (for birds.)

You can also buy native plants from producers such as Dropseed Nursery in Goshen ([www.dropseednursery.com](http://www.dropseednursery.com)) or Shooting Start Nursery in Georgetown. Or ask friends to share. Butterfly and hummingbird seed packs are also fun and easy.

Another idea for bringing back some wildness to your yard is to plant a rain garden. The purpose of a rain garden is to plant in an area of runoff, with deep-rooted native plants who can live in wet or dry conditions. This slows runoff, regulates standing water, and provides beauty and habitat. Dropseed Nursery’s website has a link to plants that do well in rain gardens, such as coneflowers, asters and grasses.

Begin bringing back some wildness and enjoy many surprises, including wildlife, beauty, and cleaner water and air.



*Trout Lily*

### **Tree Service:**

Pruning  
Cabling  
Removal  
Stump Removal



**Beechwood**  
**Trees & Gardens**

Since 1988

Call Paul Clinton or Kevin Klarer at 241-0471

### **Landscaping:**

Tree planting  
Shrub planting  
Mulching  
Maintenance

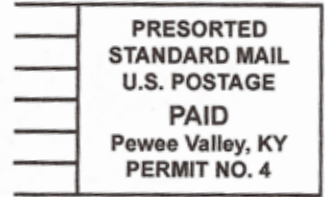
# PEWEE VALLEY CALENDAR OF EVENTS

DATE	ACTIVITY	FOR INFORMATION
Every Fri & Sat starting Sept 11	7 and 7:30 pm - <b>Spirits of LaGrange Ghost Tours</b> - Tours fill up quickly; reservations recommended. 90 minute tour \$15 pp.	Discover Downtown LaGrange 291-1766
Tues, Sept 1	8 pm - <b>Arbor Ridge Vine &amp; Grill's Fall Wine Tasting Series</b> - Featured speaker, wine tasting and hors d'oeuvres. \$25 pp.	Arbor Ridge Vine & Grill 241-5544
Thurs, Sept 10	7 pm - <b>Pewee Valley Town Council Meeting.</b>	Pewee Valley Town Hall 241-8343
Sat, Sept 12	9 am -1 pm - <b>Free shredding event</b> - O.C. residents can bring sensitive documents, discs, credit cards for on-site shredding to Oldham County Fairgrounds. Thanks to A+ Paper Shredding.	O.C. Recycling 222-1476
Sat, Sept 12	6 - 9:30 pm - <b>Smith-Berry Vineyard Dinner and Concert</b> - Leo Night and the Moonlighters (great Motown sound).	Smith-Berry Vineyard 845-7091
Sept 14, 21 & 28	5-8 pm - <b>Board night @ the Library</b> - Drop in the Main Library on Monday nights in September for some board game fun. Everyone is welcome!	O.C. Public Library 225-9713
Tues, Sept 15	8 pm - <b>Arbor Ridge Vine &amp; Grill's Fall Wine Tasting Series</b> - Featured speaker, wine tasting and hors d'oeuvres. \$25 pp.	Arbor Ridge Vine & Grill 241-5544
Thurs, Sept 17	7-9 pm - <b>Concert in the Dell</b> - Lousville Bach Society. \$12 members; \$15 non-members.	Yew Dell Gardens 241-4788
Sept 24-27 Oct 2-4	<b>On Golden Pond</b> - Elderly couple facing their twilight years. Thursday, Friday, Saturday performances at 8:00 pm. Sundays at 2:30 pm. Adults \$15; Seniors and Students \$12.	Little Colonel Playhouse Reservations 588-1557
Sat, Sept 26	6 - 9:30 pm - <b>Smith-Berry Vineyard Dinner and Concert</b> - The Jimmy Davis Band (funk infused rock).	Smith-Berry Vineyard 845-7091
Sept 27-28	7 pm - <b>Little Colonel Auditions</b> - <i>Dinner with Friends.</i>	Little Colonel Players 241-9906
Tues, Sept 29	8 pm - <b>Arbor Ridge Vine &amp; Grill's Fall Wine Tasting Series</b> - Featured speaker, wine tasting and hors d'oeuvres. \$25 pp.	Arbor Ridge Vine & Grill 241-5544

**THE CALL OF THE PEWEE**

312 Mt. Mercy  
P. O. Box 769  
Pewee Valley, KY 40056

[www.peweevalleyky.org](http://www.peweevalleyky.org)



**RETURN SERVICE REQUESTED**

The Call of the Pewee is a monthly publication of the Pewee Valley City Council, Bob Rogers, Mayor, and is mailed free to all Pewee Valley residents.

To submit news or advertising, please contact **Editor Paula Kennedy** at 241-4106 or email at: [editor@peweevalleyky.org](mailto:editor@peweevalleyky.org). A yearly subscription for non-Pewee residents is \$12.00. To subscribe, send your name, address, telephone number and payment to:

City Hall • 312 Mt. Mercy • P. O. Box 769 • Pewee Valley, KY 40056

**Oldham County Physical Therapy**

Shannon D. Snider P.T., CSCS  
Karen Snider P.T.

P. O. Box 615 Office: (502) 243-6868  
309 LaGrange Rd. fax: (502) 243-6867  
Pewee Valley, KY 40056

Gravely Power King Kohler

**TRACTOR SALES & SERVICE**  
**HERDT MOTOR COMPANY**  
since 1910

Wm. Herdt, Jr., Owner  
(502) 241-8445  
221 La Grange Road P. O. Box 785 Pewee Valley, KY 40056